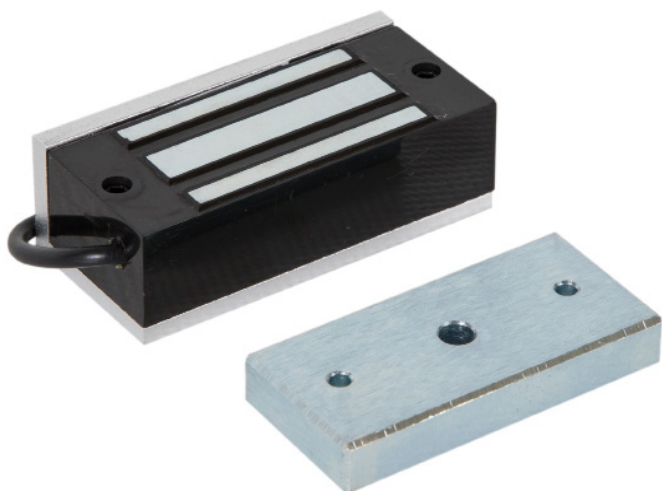




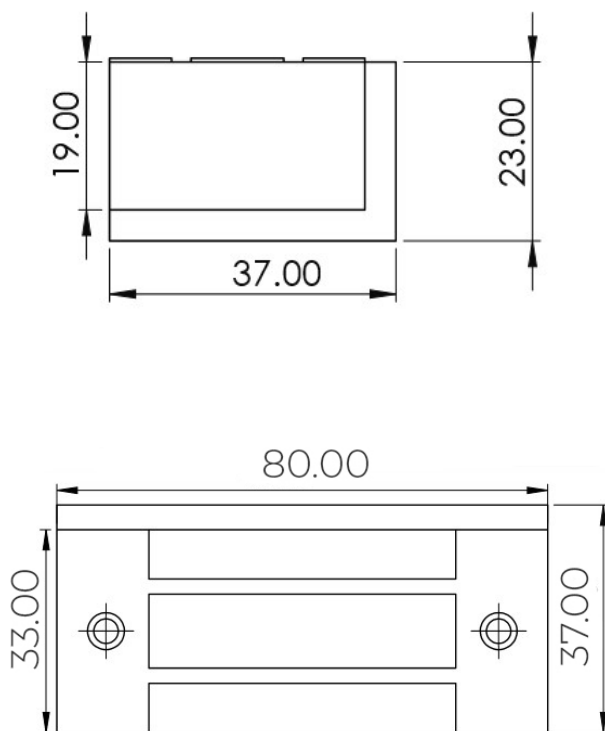
# MICRO/CABINET MAGNETIC LOCK (100LB)

**MAGNETIC LOCK**

Micro range of maglocks and brackets from a market leader in access control.



**ML100**



SPECIFICATION	FEATURES	OTHER PRODUCTS
---------------	----------	----------------

**ML100**

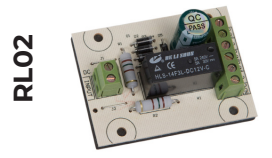
- Epoxy potted housing
- 12VDC @ 150mA
- 60kg (100lb) holding force
- Built in surge protection
- Cable length: 120mm
- Surface mount
- Fail safe operation (power to lock)
- +/- 15% voltage tolerance
- -10° to +50° operating temperature

**ML100**

- Slim line micro magnet
- Ideal for cabinets and lockers
- No residual magnetism

Suitable Brackets/Housings:

- Comes complete with L bracket



DIMENSIONS	CONTENTS
------------	----------

**ML100**

- 80x33x20 (mm) Maglock
- 73x32x11 (mm) Armature
- 0.55kg Boxed
- 0.27kg Unboxed

**ML100**

- Micro magnetic lock
- Armature plate
- L bracket
- Fixing kit
- Instructions
- Armature fixing template

